

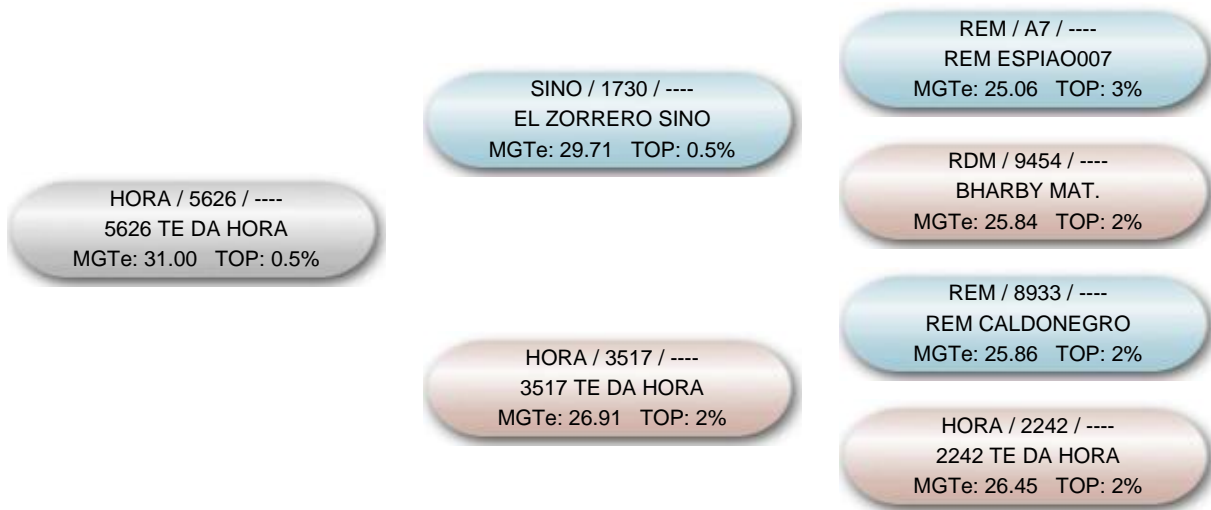
Nome do animal 5626 TE DA HORA			Proprietário: 2020 - Fazenda Nossa Senhora de Fátima / José R. Hofig Ramos Criador: 128 - Fazenda Dinorá / José Roberto Hofig Ramos		
Série HORA	RGN 5626	RGD	Raça Nelore	Categoria PO	Variedade Padrão
Central Araucária Genética Bovina			Reprodução Programada		
Sexo Macho	Situação Ativo		Dt. Nasc. 02/09/2021	MGTe 31.00 @53	TOP @ 0.5%

DIPPG -0.83 @ 38 @ 16%	D3PG 76.73 @ 52 @ 36%	DIPMG* -2.364 @ 45 @ 0.5%	MP120G 2.76 @ 39 @ 9%	MP210G 3.36 @ 38 @ 13%	MTP120G 9.13 @ 44 @ 0.5%	MTP210G 13.94 @ 44 @ 0.5%	DSTAYG 83.18 @ 44 @ 8%	DPACG 10.01 @ 18 @ 3%	DPGG -1.21 @ 57 @ 6%
DPNG 1.87 @ 60 @ 98%	DP120G 12.73 @ 55 @ 0.1%	DP210G 21.16 @ 57 @ 0.1%	DP365G 37.88 @ 60 @ 0.1%	DP450G 41.58 @ 61 @ 0.1%	DPAVG 34.77 @ 26 @ 94%	DCARG 0.094 @ 39 @ 86%	DIMSG 0.522 @ 45 @ 100%	DPE365G 1.88 @ 55 @ 0.5%	DPE450G 2.46 @ 58 @ 0.5%
DAOLG* 4.65 @ 60 @ 2%	DACABG* 0.49 @ 59 @ 5%	DMARG* 0.04 @ 55 @ 19%	DMACG -0.043 @ 2 @ 16%	DPCQG 33.21 @ 65 @ 0.1%	DPPCG 12.80 @ 65 @ 0.1%	DEDG 74.98 @ 47 @ 0.5%	DPDG 73.96 @ 46 @ 4%	DMDG 74.10 @ 37 @ 3%	DESG 74.99 @ 56 @ 0.1%
DPSG 74.74 @ 51 @ 2%	DMSG 74.92 @ 51 @ 0.5%	DALTG 4.20 @ 52 @ 100%	DFRAMEG 0.701 @ 45 @ 95%	MGTe_CR 28.34 @ 49 @ 1%	MGTe_RE 37.19 @ 60 @ 0.1%	MGTe_CO 9.17 @ 55 @ 1%	MGTe_F1 8.71 @ 56 @ 1%		

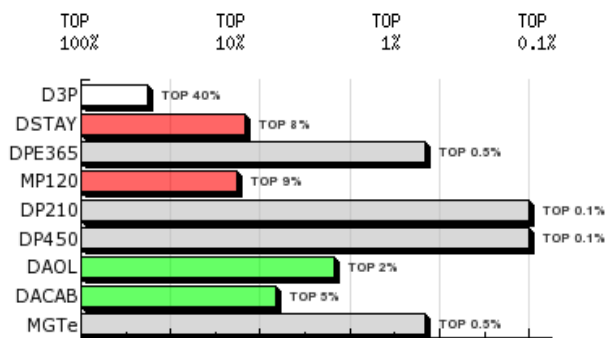
@: Acurácia    @: TOP    DEP G: DEP Genômica    \*: DEP com fenótipo incorporado    Em destaque DEPs que compõe o MGTe

NF3P	NN120	NRN120	NFSTAY	NF120	NR120	NF210	NR210	NF450	NR450	NFUS	NRUS	NFSAMS
0	0	0	0	0	0	0	0	0	0	0	0	0

### Genealogia



### DEPs Gráficas



- Diamante - TOP 1%
- Esmeralda - TOP 5%
- Rubi - TOP 10%
- Safira - TOP 20%
- Topázio Imperial - TOP 30%
- TOP maiores 30%